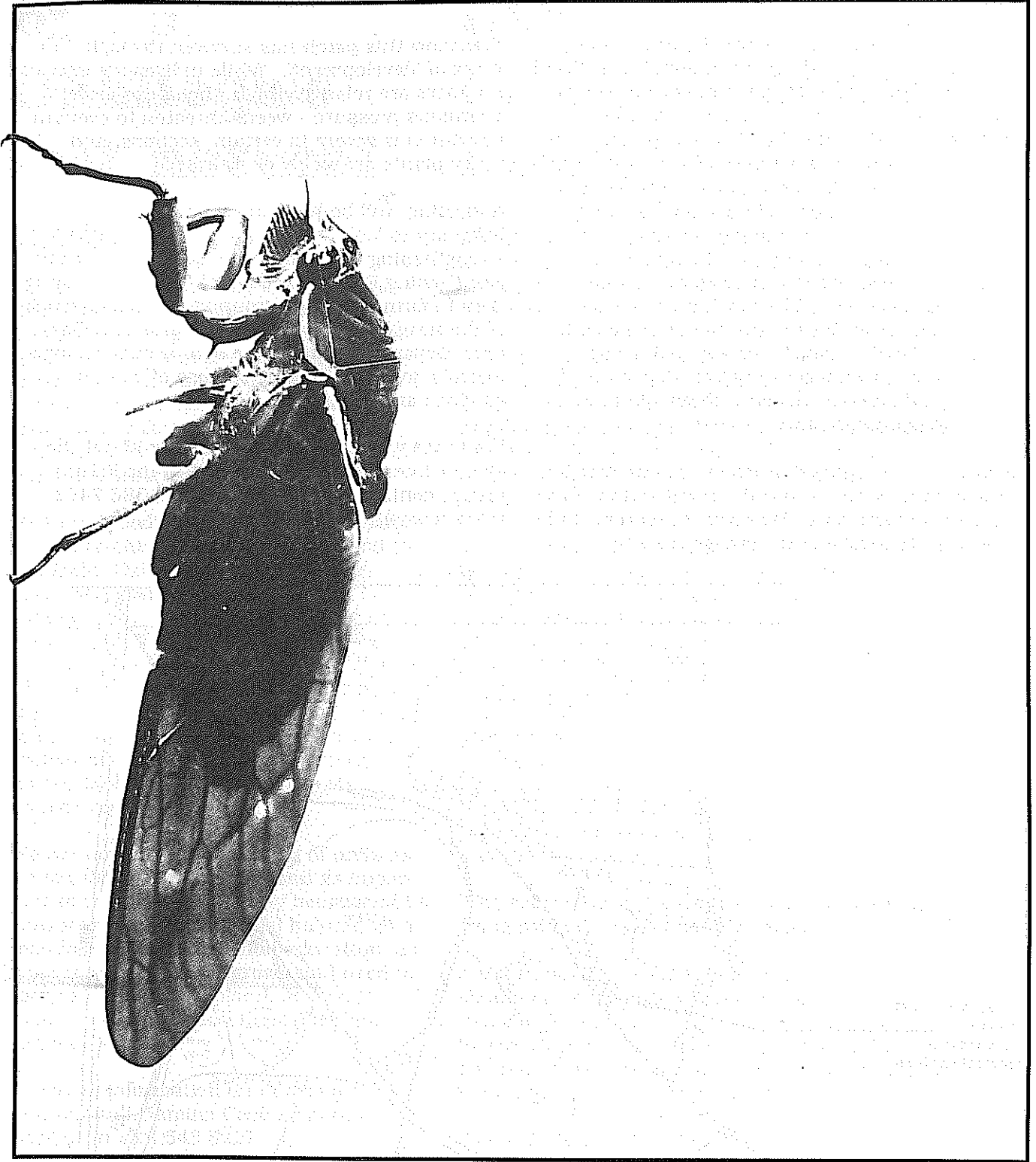


# INDIGENOTES



Vol. 4, No. 1

January 1991

# Royal Park West Friends Group

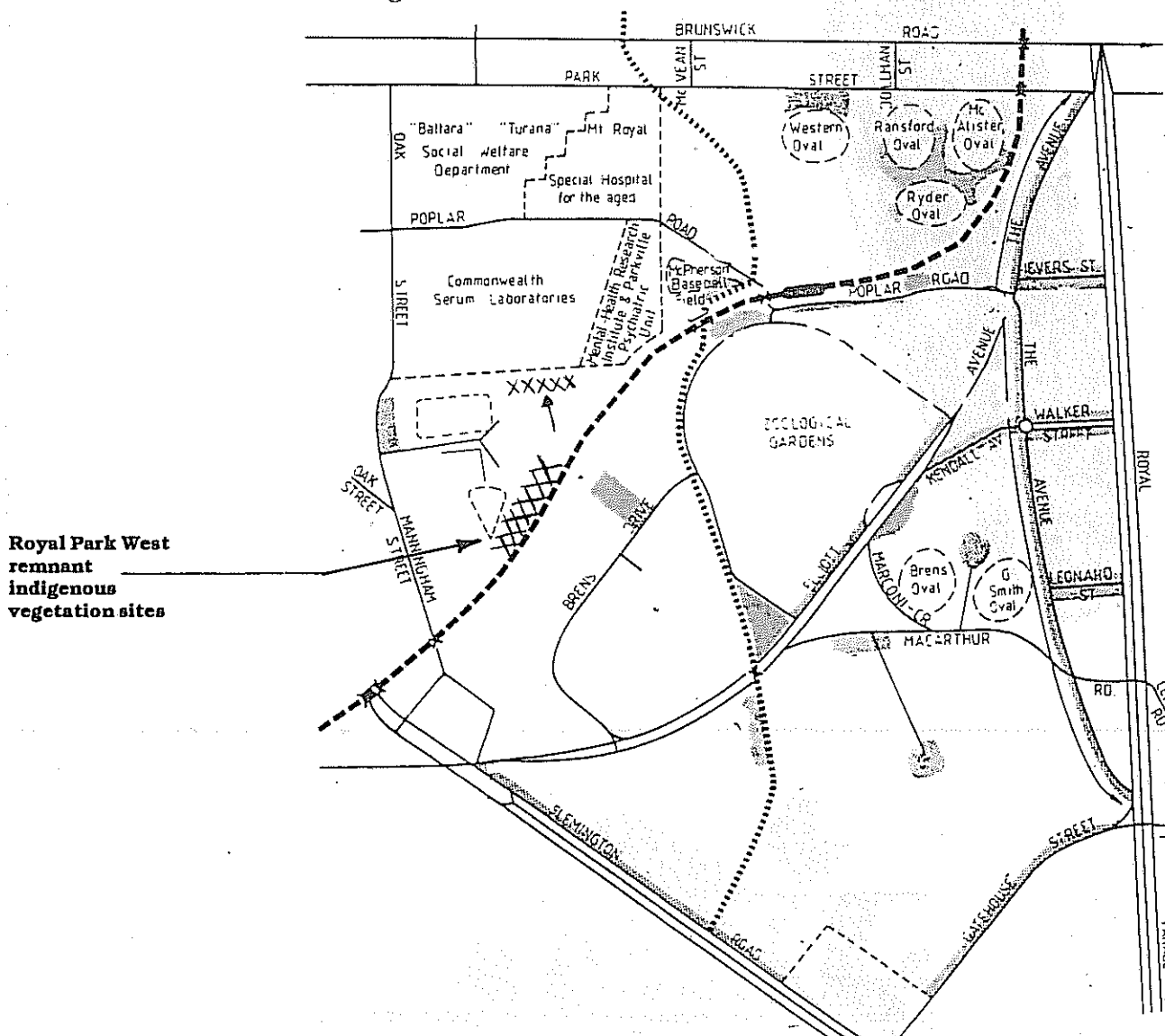
Royal Park West is a small area (approx 3 ha) adjacent to the Upfield railway line between Royal Park and Flemington Bridge stations, some 4 km from Melbourne's centre. Much of the site is used by the Melbourne City Council as a tip. On either side of this tip are tracts of remnant indigenous vegetation. The southern section abutting the tip is relatively rich in indigenous species. According to a vegetation survey done by Darcy Duggan in 1986, there are over 30 species of indigenous trees, shrubs, grasses and herbaceous plants present. They include 7 Acacia species, stands of *Eucalyptus camaldulensis*, 2 species of *Pimelia*, *Danthonia* spp, *Stipa* spp, *Atriplex* spp, *Dichopogon strictus*, *Tricoryne elatior*, *Hardenbergia violacea*, *Kennedia prostrata*, and *Lomandra* spp.

Melbourne City Council oversees the site and has plans to incorporate it into the revegetation of the entire Royal Park area. However, at present, little resources are available to manage the site.

Somehow this patch has survived through 150 years of 'development'. While indigenous species numbers are relatively high, the site is under enormous pressure - weeds threaten to overrun it, erosion is severe in certain sections, and many plants are sickly or diseased.

A meeting will be held on the site on Sunday 10 February to look at strategies for restoring and strengthening the indigenous plant community (see Coming Events for details). The intention is then to form a Friends group to undertake much of the revegetation work. MCC Parks and Gardens Department staff have shown support for a Friends group by offering the use of certain facilities and equipment.

For those wanting more information about the site, or interested in taking part in the Friends group, contact Adam Muyt, on (03) 386 7491 (after hours).



# Help rescue one of Oakliegh's last natural areas.

The Clayton Community Environment Group have an ongoing campaign to prevent the disappearance of the local area's scarce natural vegetation. One of these areas, the last Redgum Woodland in the Oakliegh municipality (Vic), is currently under threat of being cleared for units to be built by the Ministry for Housing and Construction.

Redgum Woodlands once covered a large area, stretching from the coast inland to Caulfield, Oakliegh and Dandenong. These Woodlands consisted of Red Gums, Swamp Gums, Wattles and many native grasses and flowering herbs. This rare Redgum Woodland at Oakes Avenue Clayton is one of three places that have the native grasses and herbs still present in near their natural number. So far 57 species of different plants have been found, 10 extremely rare in the Melbourne region.

We are opposing the building of units as we see this Redgum Woodland as important to the local community because of its values for plant and animal habitat, as a resource for environmental education, as a source of seed to be grown and used to recreate natural bushland, and as a nature reserve for local residents and visitors.

For more information on how to get involved call Damien Cook or Karen Adams on (03) 543 8227.

# Taxpayers pay for timber industry to log Victoria's forests

The Australian Conservation Foundation has revealed that the Victorian Timber industry will be paid an estimated \$41.7 million by the taxpayer to log Victoria's forests in the 1990-91 financial year. This represents nearly \$14 for every cubic metre of timber logged.

According to Tim Fisher, the ACF's Victorian Agencies Liaison Officer, these services are paid for by the taxpayer at nearly twice the cost that the Timber industry pays for them through timber royalties and roading charges.\* "If the Department's forestry program was run as a business, it would have gone bankrupt years ago", Mr Fisher said.

The Victorian Premier, Joan Kirner, while Minister for Conservation, Forests and Lands, stated in the Government's *Timber Industry Strategy* that royalties will provide full coverage of timber production costs plus a 4% return to Government. The performance of the Department of Conservation and Environment falls well short of this mark.

In effect, the Government is using much of this \$41.7 million of taxpayer's money to help the timber industry to log environmentally sensitive areas such as rainforest and old-growth forest. The ecological damage of this practice is compounded by a massive economic cost to Victorian taxpayers.

"The simple fact is that our valuable timber resources are being sold off cheap" said Mr Fisher.

A substantial increase to hardwood timber royalties should be an immediate priority. It seems extraordinary that the Government, already having to make cutbacks in services such as Health, Education and Conservation, has not yet seen fit to eliminate this subsidy by making the timber industry pay its way.

The ACF called for an independent inquiry into the economics of the timber industry and of its management by the Victorian Department of Conservation and Environment.

\* ACF media release 8/1/90. See also "Cost/revenue analysis of forestry management in the Victorian Department of Conservation and Environment", Australian Conservation Foundation, January 1991".

## Profile:

# Blackburn and District Tree Preservation Society

By Brian Crouch\*

The Blackburn Tree Preservation Society (the '& District' was added a few years later) began its life in 1959, at a time when closer suburban development reached Blackburn, and was causing a substantial loss of the trees which had made it such a pleasant place to live. Since that time the Society has passed through many phases. When the Society was formed, it was one of very few local or statewide conservation groups in Victoria. Since then, public perception of the importance of preserving the natural environment have changed, and the Society has been at the forefront of many of these changes.

During its earliest years, the Society was mostly concerned with the local area, in encouraging developers to leave trees in new subdivisions, the Council to acquire land for parks before it was zoned residential, and residents to plant native plants; these strategies were helped by the election of members to the Nunawading Council. The Society also organized excursions to places of conservation interest around Victoria and, with the Doncaster & Templestowe Conservation Society, mounted an annual wildflower display.

Trees and shrubs were also planted in public areas and provided to schools, kindergartens, scout and guide groups etc for their planting. The earlier plantings were on a small scale, but this increased in later years, as has the proportion of indigenous species used in these plantings. More recently, members of the Society have become members of Committees of Management of the bush reserves in Nunawading. Most recent plantings have been in collaboration with these committees, and have consisted entirely of indigenous plants propagated from local stock. This has been made possible by the indigenous propagation programme, begun as a bicentenary project, but continuing with funds provided by Nunawading Council, and operating within the Council's plant nursery. While this originated from the Committees of Management, the organization of the programme has been by Tree Society members.

Apart from a bimonthly newsletter, which has appeared regularly since 1964, the Society has published several booklets. The first, 'The Choice

is yours', had its first edition in 1960 and its most recent in 1985. Its theme has always been to encourage the preservation of natural vegetation in gardens, and for new plantings to be of natives. Again the emphasis has changed in the most recent edition to the use of indigenous species, and also includes a section on the Planning Scheme for part of Blackburn, which the Society was instrumental in putting into effect. This Scheme controls the site coverage of buildings and hard surfaces, and the removal of trees. Another early publication recommended 100 native plants suited to the Nunawading area; this has also been revised and re-published. The latest publication, under preparation at present, is a list and short description of Nunawading's indigenous plants.

When the controversy over the proposed subdivision for farming of the Little Desert arose 20 years ago, the Society played its part in the campaign which caused it to be stopped. This campaign led to the formation of the Conservation Council of Victoria, an umbrella organization for Victoria's environmental groups, and the Society was one of its original members. Another result of the campaign was an interest in areas of uncleared freehold land in the Little Desert, and in 1973 the Society formed the Urimbirra Co-operative Society, which bought a 400 hectare block near Kaniva, to which there is an excursion each spring. In turn, the interest of Urimbirra members in the Little Desert resulted last year in the formation of a Friends of the Little Desert group, which held its first working bee in September 1989.

Since the Little Desert controversy, the Society has taken an interest in many conservation issues of State or Australia-wide interest, and whilst we may not have been directly involved, we have written countless letters to politicians on these issues over the years, and have encouraged our members to be actively involved.

The Society has become active this year in opposition to the construction of the Eastern Arterial Road through the beautiful Koonung and Mullum valleys and is a member of the Koonung Mullum Forestway Association, a coalition of local groups formed to fight the proposal. Last

\*14 Haydn Street, Blackburn 3130.

# Review: *Plant indigenous - a guide for Nunawading*

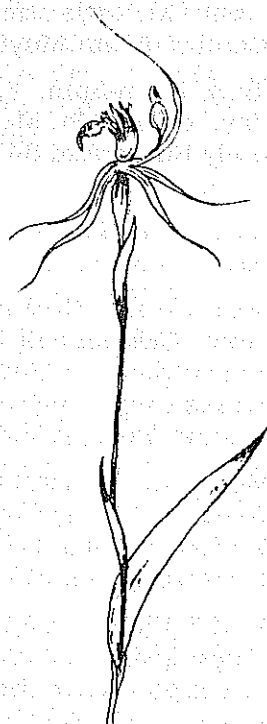
year, a change in ward boundaries for the Nunawading Council led to an election for all Councillors. The Society strongly supported candidates who stood for preservation of the environment and opposition to the arterial road, 5 of whom, out of a total of 12 Councillors, were elected.

For the future, the Society will continue to be active in propagating indigenous plants, fighting the arterial road proposal and helping to police the Planning Scheme and encourage its extension. We have also applied for a grant from the Department of Conservation and Environment to run an educational programme in our bush reserves which will also include practical help for the indigenous propagation programme.

Over the years, Nunawading has had a good reputation in its actions relating to environmental protection, although frequently not as good as we would like. The Society has played a very great part in the "greening" of Nunawading and we aim to continue to do so for many years yet.

Enquiries about membership should be directed to P.O. Box 5, Nunawading 3131.

*Caladendri dilatata*, one of the black and white illustrations from "Plant indigenous"



Blackburn & District Tree Preservation Society, 1990, softcover A5 format, 32pp, some colour photos.

This booklet has been produced to give residents, particularly of Nunawading, but also those of Box Hill, Ringwood and Croydon, information on indigenous plants, to help them in choosing for their gardens, or for public areas, plants which grew there naturally in the past.

A short introduction explains what indigenous plants are, and why they should be grown, but the bulk of the book comprises a list of species, with common name, a short description, and a code for the availability of stock at 6 local nurseries. The listing of availability of stock overcomes one of the biggest pitfalls for a book such as this - the alienation of a newcomer trying to locate someone who grows an indigenous species which they have decided they must have in their garden, but which nobody actually grows.

The book loses points however by listing nurseries which stock plants of the right species, but not of local stock. The problems caused by genetic pollution with stock from who knows where are not addressed in the booklet. To be fair, the keen indigenous shopper can distinguish from the codes which nurseries stock the real indigenous plants, however many others will not.

"Plant Indigenous" is available at local newsagents or from the Society for \$4.00 plus postage. Ring Les Smith (03) 874 2641 or Ann Clayton (03) 878 6585.

# Coming Events:

## JANUARY

- 26 Sat 2pm. **Friends of Sherbrooke Forest project afternoon.** Ridge Track - Ivy & tutsan to dig. Meet at entrance gate on Belgrave - Ferny Creek Rd. (Melways map 75 ref E5). Margaret Finger (03) 754 3548.
- 26 Sat 4pm. **Mount Eliza Association for Environmental Care** project day. Anne Read (03) 787 2034.
- 27 Sun 10am. **MEAFEC** see 26 Jan. MEAFEC also has project work on the 4th weekend of February.
- 27 Sun 2 pm. **F. O. Victoria's 1st Settlement site** - Sorrento. Stuart Sherrin (059) 84 1953.
- 28-1Feb. Mon-Fri. **Seed collection** in various locations in the Melbourne metropolitan area. For further details contact the Australian Trust for Conservation Volunteers' Head Office on 053 327 490 or 008 032 501.
- 29 Tues 8pm. **IFFA (Vic) meeting.** Herbarium Hall, Birdwood Ave, South Yarra (Melways Map 2G, 12A). Greg Barber, the Conservation Council of Victoria's Forests Campaign Officer, will speak on **Forest Management in the Otways and Central Highlands.** Greg has been involved in Forest Management Plans for the 2 areas.

## FEBRUARY

- National Clean Water Month.** Part of "Every Little Bit Helps" campaign organised by ACF, Life. Be in it and ECO (Earth Communications Office).
- 2 Sat 2 p.m. onwards. **IFFA seed bank working bee.** Help clear out the "rat house" so that it can be used for drying and cleaning seeds. Barbeque afterwards. BYO. Meet at the Old Ecology Annexe, adjacent National Herbarium. Michelle Arundell (03) 267 4173 (H), (03) 650 9424 (W).
- 2 Sat. **Weed eradication** - Friends of French Island State Park. Des Quinn (03) 791 2315.
- 2 Sat. **F. O. Gellibrand Hill Park** activity day. Kerryn Pratchett (03) 306 8180.
- 3 Sun 1pm. **F. O. Langwarrin Flora and Fauna Reserve** activity day. Meet at the McLelland Drive car park, Melways map 103, ref C10. Contact Ann Read (03) 787 2034.
- 3 Sun. Excursion of the Field Naturalists Club of Victoria. **Lancefield Marsupial Megafauna Fossils.** With Sanya van Huet. Contact Dorothy Mahler (03) 850 9370 (AH).
- 3 Sun. **Walk, Talk & Gawk: Braeside Metropolitan Park** with Geoff Durham (03) 523 5559. Featuring wetlands, woodlands, grasslands and heathlands, this is the Metropolitan Park for the South Eastern suburbs. Will one third of the park be sold for industrial development? Contact Victorian National Parks Association (03) 650 8296.
- 4-8 Mon-Fri. **Weed control in the Mt Worth State Park.** ATCV (see 28 January).
- 7 Tues 10am-1pm. **Greenlink Box Hill planting & maintenance.** (Every Tuesday). Fred & Fiona Cumming (03) 898 4808 (AH).
- 7 Thurs 10am. **Propagation day, F.O. Warrandyte S.P.** Meet at the Park depot. Margaret Burke (03) 844 1060. (This activity is on every Thursday)
- 9 Sat 10 a.m. - 4 p.m. **IFFA Seed Collecting workshop** at the Herbarium. Review and evaluate seed collecting for this year while it is still fresh in our minds. Michelle Arundell (03) 267 4173 (H), (03) 650 9424 (W).
- 9 Sat. **VNPA Walk, Talk & Gawk: Lake Mountain** with Jane Calder. Alpine flora at its best in summer this beautiful but controversial area recommended by the LCC as a State Park. Bookings: W. Morris (03) 818 6102.
- 9 Sat. **F. O. Dandenong Ranges N.P.** project day. Graham Barstow (03) 758 6935.
- 10 Sun 11am. Meeting to examine **strategies for restoring remnant vegetation and the setting up of a Friends Group at Royal Park West** - Melways reference Map 29, C 12. Contact Adam Muyt (03) 386 7491.
- 10 Sun. 10am-3pm. **F. O. the Yarra** activity day. Galatea Pt, Melways map 2D, ref. D7. Judy Rutherford 347 2252. (Also on Wed. 27 Jan).
- 10 Sun 10am. **Stony Ck weeding.** Mark Gardner (03) 844 3799.
- 10 Sun 2-4pm. **Greenlink Camberwell: Guided tour - Camberwell Council Nursery.** Meet at the entrance in Murdoch St, opposite the tennis courts, Melways map 60, ref B4. Dianna Burgess (03) 809 2092.
- 11 Mon 8pm. General meeting of the FNCV. Speaker: Wendy Clark on **Spiders.** National Herbarium Hall, Birdwood Ave., Sth Yarra. Margaret Potter (03) 889 2779.
- 13 Wed 7.45pm. VNPA meeting and social night. Guest speaker: Jamie Pittock on **Conserving the Alps - What the VNPA is doing.** Ormond College. VNPA (03) 650 8296.

- 14 Thurs 8pm. Botany Group meeting of the FNCV. **Parks, Plants & People** by Jane Calder. National Herbarium Hall, Birdwood Ave, Sth Yarra. Margaret Potter (03) 889 2779.
- 15 Fri 8pm. General meeting of the Entomological Society of Victoria, **Insects of the Northern Territory** - slide presentation, by Dr Mali Malipatil. Tim New (03) 718 1007 (AH), (03) 479 2247 (BH).
- 16 Sat. **Friends of Churchill N.P. & Lysterfield Lake Park** project day. Neal Smith (03) 873 2635.
- 16 Sat 9.30am. **Friends of Werribee Gorge & the Long Forest Mallee**. Project day. Judy Douglas (03) 67 2672.
- 17 Sun. 10am-12noon. **Brunswick Tree Group** activity day. Meet at Moonee Ponds Ck at end of Union St. Melways map 29, B9. Eric Ward (03) 387 9490.
- 17 Sun. **VNPA Walk, Talk & Gawk: Greens Bush (Point Nepean NP)** with Stefanie Rennick. Former private land, the subject of controversy and a massive campaign, now you can enjoy the flora and fauna in this major refuge on the peninsula. Contact Stefanie (03) 578 1679.
- 18 Mon 8pm. General meeting of the SGAP - Victoria. **Designing a natural style garden with mainly native plants** by Mrs Bev Hanson. National Herbarium Hall, Birdwood Ave. Enid Bowman (03) 882 5297.
- 21 Thurs 7.30pm. General meeting of the Fern Society of Victoria. **The cultivation of ferns from spores**, by Chris Goudey. The National Herbarium, Birdwood Ave, Sth Yarra. Bernadette Thomson (03) 391 5515.
- 23 Sat. Botany Group excursion of FNCV; **Rainforest at Toolangi** with David Cameron. Dorothy Mahler (03) 850 9379 (AH).
- 23 Sat. **VNPA Walk, Talk & Gawk: Rocky Shores - Sorrento** with Patrick Honan. A stroll along rock platforms to look at the ecology of intertidal animals and plants. Access may be steep. Patrick (03) 569 6275.
- 24 Sun 10am - 1pm. **Nunawading Indigenous Plants Project**. Seed collecting / propagation work, as required. Nunawading Council's Horticultural Centre, 82 Jolimont Rd, Forest Hill. Brian Crouch (03) 878 5053.
- 24 10am. **Friends of the Wildlife Reserves** - (LaTrobe University) working bee. Gresswell Forest. George Paras (03) 479 2871.

## MARCH

**National Landcare Month.** Part of "Every Little Bit Helps" campaign organised by ACF, Life. Be in it and ECO (Earth Communications Office).

4-7 Mon-Thurs. **Conference: Protective custody - ex-situ plant conservation in Australia.** Convened by the Australian National Botanic Gardens. Registration fee: \$65. Enquiries: Mr Lyn Meredith, Conference Convenor, A.N.B.G. GPO Box 1777 Canberra ACT 2601.

## APRIL

4-7 Thurs-Sun. **The fifth Ecopolitics conference** at the University of New South Wales, Sydney. The organisers are **calling for papers** for presentation. For details contact Dr Ronnie Harding, Centre for Liberal and General Studies, University of NSW, PO Box 1, Kensington 2033. NSW. Phone (02) 697 2433 or (02) 697 2436.

## FEBRUARY-1992

17-21 Sun-Thurs. **First International Weed Control Congress in Melbourne.** Organised by the International Weed Science Society and hosted by the Weed Science Society of Victoria. Venue: Monash University. For further information contact WSSV: Clunies Ross House, 191 Royal Parade, Parkville. Tel: (03) 347 1277.

A large range of activities such as bushwalks and "Friends" activities are published by the **Victorian National Parks Association** in their newsletter. For details contact VNPA (03) 650 8296.

*The Australian Trust for Conservation Volunteers coordinate plantings throughout Victoria and interstate. They take place throughout the week and on week-ends, usually a specified number of volunteers is required and most plantings are indigenous. For further information contact ATCV:*

*National Headquarters in Ballarat: (053) 32 7490  
Adelaide: (08) 365 1612.*

*Sydney: (02) 413 5522,*

*Tasmania: (003) 415 444.*

**The editors will be pleased to receive information about any relevant events for listing in Indigenotes.**

# Go Green Urban Bush Management Unit

From Judie Rawling\*

When in July last year the Prime Minister announced the Australian Government's goal of greening the Australian landscape by planting one billion trees by the year 2000, the task of meeting that goal was entrusted to Greening Australia, established in 1982 in the International Year of the Tree. Greening Australia was then a small community-based conservation group whose primary objective was to encourage action by the community at large to increase tree cover in both rural and urban areas. Acting as a conduit for the considerable funds flowing from the Federal Government GA has since established branch offices in each state where regional tree organizers assist the community to re-tree their public and private lands through three basic elements - expert staff support, grants for projects, and information and research activities.

Greening Australia has recently embarked on an ambitious new program - the identification and rehabilitation of remnant urban bushland areas through carefully planned and executed bush management programs. To co-ordinate this program a new GA unit has been formed - Go-Green Urban Bush Management Unit which will operate in three states: New South Wales, Victoria and Queensland. Bush regeneration programs will be funded in the usual way by local government and other authorities such as the Water Board, and the work will be carried out by trained and experienced bush regenerators. Firm links will be forged with existing tree-planting groups and land care units to deliver a comprehensive land management package to the community, and funds have been allocated for the expansion of GA's native tree nursery and the establishment of an Indigenous Seed Bank for the Sydney Region.

In New South Wales Judie Rawling and John Neff, both formerly with the National Trust of Australia (NSW) will act as project leaders. Judie and John have already started to visit urban areas throughout the state to explain the conservation ethic to landowners and land managers alike, to carry out bushland surveys and to produce workable management plans for those areas.

Community involvement is essential if we are to succeed in our goal of preserving our rapidly

dwindling bushland reserves, but financial support is vital, so lobbying local government to adopt bush regeneration techniques and strategies and encouraging them to employ qualified bush regenerators will be an important element in the Unit's strategy.

In keeping with their long-standing involvement with community groups, staff at Go-green will continue to assist voluntary regeneration groups and to support them with practical input and advice. Community groups will be encouraged and helped to apply to Greening Australia and to other government-funded programs for grants to carry out local bush regeneration and revegetation projects.

While no one can deny that revegetation of our landscape by planting trees is vitally important, it makes particular sense to those of us living in urban areas to look towards the bushland we have left, and to rehabilitate those areas that are degraded by weeds of other urban pollutants. Greening Australia has recognized the urgency of this need by establishing Go-Green Urban Bush Management Unit.

Working initially in Sydney, Wollongong and Newcastle Go-Green(NSW) will undertake bush regeneration work in a wide variety of revegetation types: heath, forest and woodland, rainforest and wetlands. Already, within a few weeks of establishment Go-green has won a number of regeneration contracts and is anticipating an early start to a half-dozen projects. For further information or assistance please contact us at PO Box 466 Gordon 2072 or phone (02) 499 2172. In Melbourne contact David Lloyd (03)654 5040 and in Brisbane Maureen See (07) 353 3707. We look forward to hearing from you.

---

\*Project Manager

## Snippets:

### **The weed**

The Department of Conservation and Environment is preparing a database on weeds and vermin in Victoria, region by region. They are just starting to enter data for Portland Region; the very first weed listed is a plant familiar to us all ... (Answer on page 12)

### **Dandenongs Wildlife Watch**

Wildlife watch has started a new program to monitor introduced predators in the Dandenong Ranges called GERONIMO. It is the Introduced Predators Database designed to eliminate the ad hoc reporting of introduced predator sightings and to eventually establish a network of recorders in each Melways grid reference for uniform sighting collection. For more info or to volunteer contact: Wildlife Watch Ph. 754 2423

P.O. Box 544  
Belgrave 3160

### **Help save a unique part of Tasmania**

At Anson River in the northeast lowlands of Tasmania there remains 400 acres of untouched Sclerophyll forest. Surrounded by State Forests which are heavily roaded and logged, this property has become an important sanctuary for wildlife displaced by the destruction of surrounding areas

Please help save this area from being destroyed by logging by assisting with a donation, however small, or a loan to hold the 400 acres until enough funds can be raised. Please write to Animal Rescue Fund, RSD 171C, Elizabeth Town Tasmania 7304 Ph. 68-1310

### **Indigenous Seed Orchard for Bendigo**

A Seed Orchard is being set up produce the seed of indigenous plants, especially understory species, for land rehabilitation purposes in the Bendigo region. The organizers of the project would like information about the needs and future needs for seeds and any advise, ideas or assistance people are willing to offer. Contact:

Ian Higgins Research Officer Land Protection Division DCE 054 446 777	Gary Lovejoy, Manager Bendigo Env. Services 103 Williamson St. Bendigo 054 414 688
---	--

Thanks to Lincoln Kern for helping with Snippets this month.

### **Land Restoration**

#### **Training in Geelong**

A series of seminars for anyone interested in the practical aspects of land restoration is being organized by Geelong Indigenous Nurseries and Gordon Technical Institute in Geelong during April and May for one night a week for ten weeks. For more info call Mark or Trish at 052 298087.

#### **Basalt Plains grasslands threatened**

Dwindling State government funds have forced the Dept. of Conservation and Environment to back off from its' plans to buy the important grasslands site in Evans St., Sunbury. The future of this site is now in the hands of the Shire of Bulla. The Council says it needs to develop it or sell it because of the tight economic times. Andy Govanstone of the Sunbury Conservation Society says the government will commit the "type of ecological crime that its' own Flora and Fauna Guarantee Act" prohibits if it doesn't move to protect this site and its' unbelievably rich variety of herbaceous plants.

Source: Ball, J. and Woodward, M. 1990 "Gov't Reneges on Rare Plant Site", Sunbury Times 23 OCT p. 5.

#### **Eucalypts disliked in Iberia**

Between two and three million acres of eucalyptus plantations are now growing in Spain and Portugal. It grows well but in tumult because they threaten lifestyles that have endured for centuries.

In Iberia, where eucalyptus for paper pulp is an increasingly important cash crop, farmers are joined in their opposition by environmentalists and leftist political parties. Many farmers pull up the seedlings and do civil disobedience to prevent the planting of them. An environmental group in Portugal called Quercus has organised protests against eucalyptus saying it's use dries up water sources, causes soil erosion, destroys wildlife and drives peasants off the land. Environmentalists in Spain complain that the plantations are crowding out the native oak and beech forests.

Iberia is a peninsular mirror of eucalyptus' international wealth and weight. There are about 15 million acres of plantations in 100 countries around the world today. The genus proves so attractive because one tree produces twice as much wood pulp as a comparably sized pine tree. Source: Mantalbano, W. 1990 "Defending a lifestyle against gums and money", Sunday Age, 16 Dec., p. 13.

## Snippets:

### **Wetlands Conference in 1992**

Brian Halloran, Secretary of the State Working Group on River Murray Wetlands and Forest Management, has proposed a major Wetlands Conference in Canberra in 1992 with an emphasis on management for conservation purposes. He would like submissions from interested parties on issues to be discussed, potential speakers and workshop leaders, conference structure and a suitable means of organizing the conference to gain a national approach. Contact: Rural Water Commission, 590 Orrong Rd., Armadale 3143 Ph. 03 508 2677

### **Arundel Dam Proposed Again**

The spectre of the Arundel Dam has been raised again. As part of the State and Federal Governments' urban consolidation policies, the dam has been proposed to reduce the flood risk for new housing projects downstream. There are cheaper alternatives. The dam would flood the river back into Organ Pipes National Park and flood significant sites along Deep Creek.

Source: Jamie Pittock, VNPA Newsletter December 1990

### **Marine Conservation Review**

Helen Rosenbaum, of the VNPA Marine Park Subcommittee, has reviewed the status of marine conservation in Victoria in Parkwatch\*. She points out that only 0.5% of the State's coastal waters is included in Marine and Estuarine Protected Areas. She also reports that the VNPA aims to have additional marine reserves and parks declared in Victoria to create a representative system, to be managed together with existing parks in a logical and consistent manner. VNPA endorses the inclusion in the proposed National Parks and Reserves Division of DCE of separate sections for 'coastal' and 'marine' parks. It also urges that the LCC survey marine communities and habitats to define new sites for marine parks and reserves and zone the entire Victorian coast for protection, general use or development.

\*Sept. 1990 pp. 5-9

### **Sydney's Bushland**

A newly published book "Taken for Granted - the Bushland of Sydney and its suburbs" by Doug Benson and Jocelyn Howell has been received by the editors.

### **Veg retention and local planning schemes**

An evaluation of local planning schemes and procedures to achieve vegetation retention at the local government level has been published by the Conservation Council of Victoria\*.

The 70 page report makes a series of recommendations to improve local government's performance with respect to vegetation retention. These are summarized under the headings:

1. Improved advice and assistance,
2. Staff training and support services,
3. Information services,
4. Reforming planning schemes on the rural/urban fringe, and
5. Enforcement.

\* "Good intentions and lost opportunities", report prepared by Peter Durkin for the Conservation Council of Victoria, funded by the Metropolitan Area Improvement Program, November 1990.

### **Fern spore collection**

The Fern Society of Victoria runs a spore bank for its members. The species stocked in the spore bank mainly comprise exotic species, and the data about each species published in their newsletter contains no information about provenance of the spores, so the spore bank may not be useful for revegetation purposes. Indigenotes will be bringing you a few snippets on fern propagation in future, but here is one hint from the Society's Newsletter:

To collect fern spore it is not necessary to collect a large amount of spore or even to separate out the spore. Simply place the spore bearing fronds in an envelope of a suitable size. It is advisable to ensure that any envelope or other container does not allow the spore to leak out through the corners, as the spores are very small and often blow out through quite small openings. Bending over the corners of the envelope and securing with a piece of tape or staple will prevent loss. It is worth using a 10x hand lens to check that spores are still present on a frond - ideally some of the spore sacs should be unopened. Beware of the brown powder which might still be around the frond - this may just be bits of the spore sacs, not spores. New fronds appear on ferns in Spring, and about this time of year (around Melbourne at least) ferns will be bearing spores.

According to the Society's Spore Bank Manager, spores can be stored at room temperature for usually at least one year.

## What is IFFA?

The Indigenous Flora and Fauna Association (IFFA) is an organisation dedicated to the conservation of the indigenous Australasian biota. Its members, comprising both amateur and professional workers come from diverse backgrounds including botany, zoology, ecology, horticulture, environmental management, education and other fields.

The organization believes that conservation of plants, animals and the communities they form, must be based on sound knowledge of their biology, ecology, distribution, status and management requirements. To achieve these ends, we aim to foster a broad multidisciplinary approach, bringing together expertise from a wide range of professions which are too often independent and narrowly focussed. We believe this approach is necessary to maximise the conservation, social and economic benefits of responsible resource management.

In particular we wish to encourage participation and involvement in the important emerging disciplines of conservation and restoration biology, habitat reconstruction, revegetation and the active management of vegetation and fauna - on public and private lands.

It is a primary objective of the Association to research, collect and disseminate information concerning conservation matters to relevant agencies, groups and individuals through *Indigenotes* and our new journal *Advances in Nature Conservation*. We also aim to participate on debate in environmental issues and help in the formation of conservation policies at the local, state or national levels.

The resources of IFFA are available to both the public and private sectors of the community to help establish appropriate conservation and management strategies.

## Memberships

IFFA membership costs  
\$40 for groups,  
or  
\$20 for individuals  
and families.

Membership includes  
11 issues of  
*Indigenotes* per year.

Memberships should be sent to  
The Secretary,  
Indigenous Flora and Fauna Association,  
Ms Michele Arundell,  
2/81 Alexandra Ave  
South Yarra Vic 3141.

## MISSING BACK COPIES OF INDIGENOTES?

Individual back copies of  
*Indigenotes* are available from  
Michele Arundell  
for a donation.

Complete sets  
(vol. 1 no. 1 to vol. 3 no. 11)  
are available for \$50.

Make cheques payable to the Indigenous  
Flora and Fauna Association,  
and send orders to  
The Secretary,  
IFFA,  
Ms Michele Arundell,  
2/81 Alexandra Ave,  
South Yarra 3141.

## IFFA (Vic) Jan. meeting:

Tuesday 29 January, at the Herbarium Hall, Birdwood Ave, South Yarra (Melways Map 2g, 12A). Greg Barber, the Conservation Council of Victoria's Forests Campaign Officer, will speak on **Forest Management in the Otways and Central Highlands**. Greg has been involved in Forest Management Plans for the 2 areas.

### Seed Bank working bee

Sat 2 February, 2 p.m. onwards. Help clear out the "rat house" so that it can be used for drying and cleaning seeds. Barbeque afterwards. BYO. Meet at the Old Ecology Annexe, adjacent National Herbarium.

### Seed Collecting workshop

Sat 9 February 10 a.m. - 4 p.m. at the Herbarium. Review and evaluate seed collecting for this year while it is still fresh in our minds.

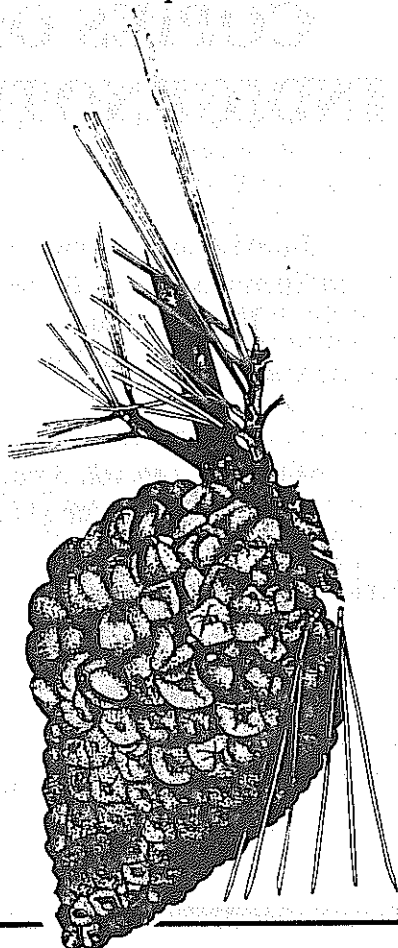
### February IFFA Committee meeting

Tuesday 5 February, 6.30 p.m. at Tony's, 10 Alsace Street, East Brunswick.

### February IFFA meeting

Tuesday 26 February. Tour of the Herbarium

**Front Cover:** A cicada. See the book "Australian Cicadas" by MS Moulds, published by the NSW University Press, P.O. Box 1, Kensington NSW 2033; recommended retail price \$39.95.



The Weed:  
Monterey pine  
(*Pinus radiata*)  
drawn by  
Anita Barley.

## Contents:

Royal Park West Friends Group	2
Help rescue one of Oakliegh's last natural areas	3
Taxpayers pay timber industry to log Victoria's Forests	3
Profile: Blackburn & District Tree Preservation Society	4
Review: Plant indigenous - a guide for Nunawading	5
Coming events:	6
Go Green Urban Bush Management Unit	8
Snippets: The weed, Dandenongs Wildlife Watch, Help save a unique part of Tas, Indig. seed orchard near Bendigo, Land restoration in Geelong, Basalt plains grassland threatened, Eucalypts disliked in Iberia, Wetlands conference in 1992, Arundell Dam proposed again, Marine Conservation reviewed, Sydney's bushlands, Veg retention and local planning schemes, Fern spore collection.	9

### Office Bearers:

**President:** Geoff Carr, 69 Spenseley Street, Clifton Hill Victoria 3068. Phone (03) 489 4191 (work), (03) 8225784 (home).

**Vice-President:** Graeme Lorimer, 42 Gratten Road, Montrose, 3765. Phone (03) 728 5841 (home).

**Secretary:** Michele Arundell, 2/81 Alexandra Ave South Yarra Victoria 3141. (03) 267 4173 (home), (03) 6509424 (work).

**Treasurer:** Susan Lee, (03) 427 0061 (home).

**Editors:** Tony Faithfull & Dimi Bouzalas, 10 Alsace Street, Brunswick East, Victoria 3057. Phone (03) 386 0264 (home).

**NSW IFFA contact:** Judie Rawling, (02) 499 2172 (after hours).

Contributions to *Indigenotes* should be sent to the editors - the deadline for the next issue will be 1 September.

The views expressed in *Indigenotes* are not necessarily those of the Indigenous Flora and Fauna Association.

Before reproducing any material from *Indigenotes*, please ask the author and editor for permission, and please include an acknowledgement of the form "Reproduced from *Indigenotes*, the newsletter of the Indigenous Flora and Fauna Association".